

35 Ashwood Close, Oldbury, B69 4SD

£115,000



- Top Floor Apartment
- Two Good Bedrooms & Study/Office
- Kitchen
- EPC Rating: C(70)
- Dual Aspect Living Room
- Allocated Parking Space

A RARE opportunity to purchase a SPACIOUS APARTMENT located EXCLUSIVELY ON THE TOP FLOOR within a modern development in a convenient location within Oldbury.

Viewings VITAL to appreciate size on offer. Benefiting from electric heating and double glazing, this ideal first time purchase comprises; hallway, living room with designated kitchen area, two good size bedrooms, master with study room/office off, store room and bathroom with shower. With secure communal areas and allocated parking space.

Offered with NO UPWARD CHAIN.

EPC Rating : C(70)

Property Tenure
Leasehold

Council Tax Band
A

ACCOMMODATION

Location

The property is conveniently located in a cul-de-sac residential location in a modern estate off Titford Road within;
-circa. 1.2 miles from Langley Green Train Station,
-circa. 0.9 miles from Junction 2 of the M5,
-circa 1.5 miles from Oldbury Town Centre and
-circa. 6.2 miles from Birmingham City Centre.

Description

A spacious top third floor apartment within a modern purpose built apartment block of traditional brick construction built in the 2000s.

The apartment has excellent accommodation over circa. 707sq ft (65sq metres) and is unique being the only apartment on the top floor and having panoramic views from all aspects.

Benefiting from uPVC double glazing and gas central heating.

Accommodation - Please Refer to Floor Plan for Measurements

- Hallway,
- dual aspect living room,
- kitchen area,
- master bedroom with room off (making suitable study, office, nursery, store or games room),
- dual aspect second double bedroom and
- bathroom with shower.

Outside

With allocated parking space.

Communal Areas

With secure communal hallway and stairs.

Lease

150 Years from 1st January 2005.

Ground Rent

£129.50 per annum.

Service Charges

£1,200 per annum.



Fixtures and Fittings: All fixtures and fittings mentioned in these particulars of sale are included in the asking price. All others are specifically excluded, but some items may be available by separate negotiation.

Need a solution with a property matter? Cottons can assist;

Residential Sales 0121 247 4747
sales@cottons.co.uk

Auctions 0121 247 2233
auctions@cottons.co.uk

Property Management 0121 247 2030
property@cottons.co.uk

Landlords Property Insurance 0121 247 2030
insurance@cottons.co.uk

Residential Lettings 0121 247 2299
lettings@cottons.co.uk

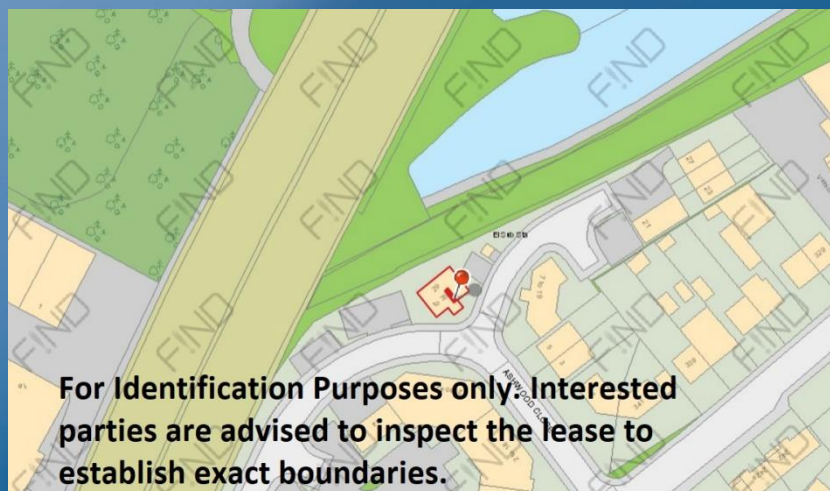
Commercial Sales & Lettings 0121 247 4747
commercial@cottons.co.uk

Energy Performance Certificates 0121 247 2299
epc@cottons.co.uk

RICS Valuation Surveys 0121 247 4747
sales@cottons.co.uk

Cottons

CHARTERED SURVEYORS



Cottons Chartered Surveyors give notice that (i) the particulars are set out as a general outline copy for the guidance of intending purchasers or lessees, and do not constitute part of an offer or contract; (ii) all descriptions, dimensions, references to condition and necessary permission for use and occupation, and other details are given without responsibility and any intending purchasers or tenants should not rely on them as statements or representations of fact but must satisfy themselves by inspection or otherwise as to the correctness of each of them; (iii) no persons in the employment of Cottons Chartered Surveyors has any authority to make or give any representation or warranty whatever in relation to this property.

Cottons Chartered Surveyors have not tested any apparatus, equipment, fixtures and fittings or services and so cannot verify that they are in working order or fit for the purpose. A Buyer is advised to obtain verification from their Solicitor or Surveyor. References to the Tenure of a Property are based on information supplied by the Seller. The Agent has not had sight of the title documents. A Buyer is advised to obtain verification from their Solicitor. You are advised to check the availability of this property before travelling any distance to view. We have taken every precaution to ensure that these details are accurate and not misleading. If there is any point which is of particular importance to you, please contact us and we will provide any information you require. This is advisable, particularly if you intend to travel some distance to view the property. The mention of any appliances and services within these details does not imply that they are in full and efficient working order. These particulars are in draft form awaiting Vendors confirmation of their accuracy. These details must therefore be taken as a guide only and approved details should be requested from the agents.

35 Ashwood Close

Approximate Gross Internal Area = 65.7 sq m / 707 sq ft
(Excluding Communal Area)

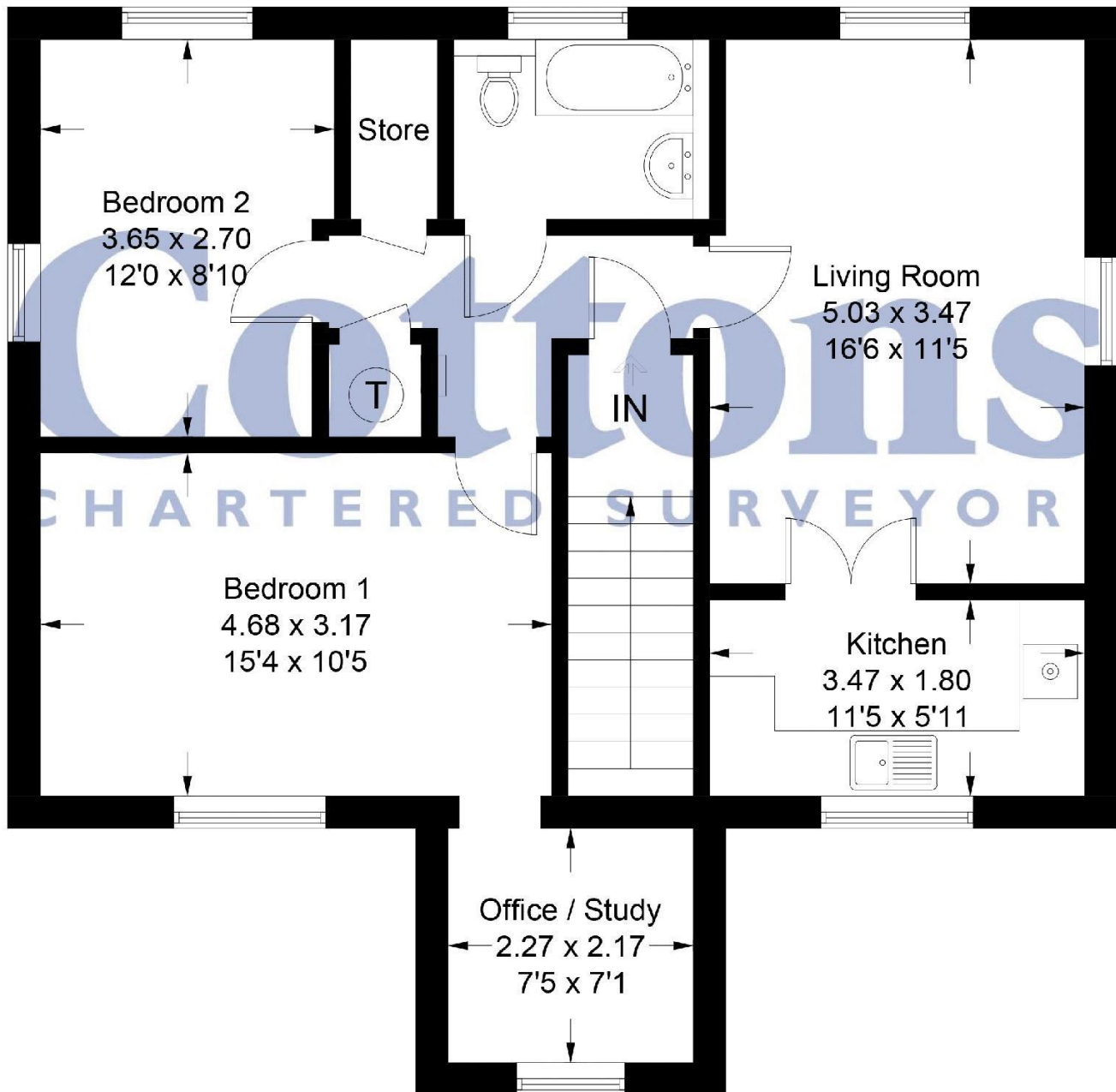


Illustration for identification purposes only, measurements are approximate,
not to scale. floorplansUsketch.com © (ID711815)

Cottons
CHARTERED SURVEYORS

0121 247 4747

359 - 361 Hagley Road, Edgbaston, Birmingham, West
Midlands, B17 8DL
domalley@cottons.co.uk

This plan is for illustration purposes only
and may not be to scale or representative
of the property.