



Cadman Homes
Residential Sales, Lettings & Property Management

Blossom Way

Southfields, Rugby CV22 5LN

£62,500 50% Share



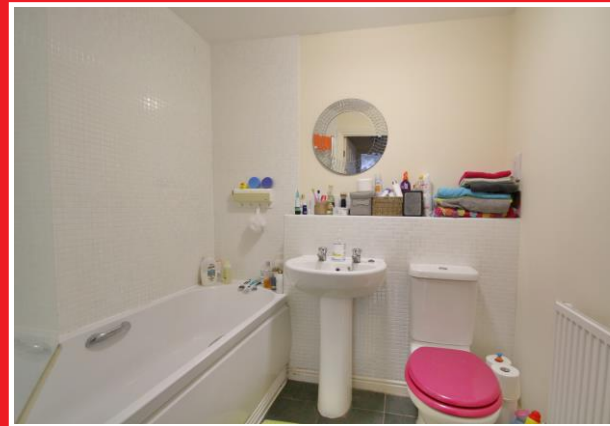
Sold on a 50% shared ownership basis this two bedrooms first floor apartment offers a large lounge/diner with open plan kitchen, two double bedrooms and a bathroom.

With allocated parking and visitors' spaces and communal gardens, this property is sold as shared ownership but you can "staircase" to 100% ownership after 3 months. With intercom entry, PVCu double glazing, gas central heating, energy rating - B



For illustrative purposes only. Decorative finishes, fixtures, fittings and furnishings do not represent the current state of the property. Measurements are approximate. Not to scale
Made with Metropix ©2018

- Two double bedrooms
- Lounge/diner with open plan kitchen
- 50% share, 100% staircasing is possible after 3 months
- Popular area close to shops and schools
- Service charges £97.35 PCM
- Rent per month £190.92
- Ground rent £12.50
- PVCu double glazing, Gas central heating
- No Chain
- Viewing advised!
- Communal gardens
- Allocated parking and visitors' spaces



6 Albert Street, Rugby CV21 2RS Tel: 01788 560 905 rugby@cadmanhomes.co.uk www.cadmanhomes.co.uk

MONEY LAUNDERING REGULATIONS: Intending purchasers will be asked to produce identification documentation at a later stage and we would ask for your co-operation in order that there will be no delay in agreeing the sale. 2. General: While we endeavor to make our sales particulars fair, accurate and reliable, they are only a general guide to the property and, accordingly, if there is any point which is of particular importance to you, please contact the office and we will be pleased to check the position for you, especially if you are contemplating traveling some distance to view the property. 3. Measurements: These approximate room sizes are only intended as general guidance. You must verify the dimensions carefully before ordering carpets or any built-in furniture. 4. Services: Please note we have not tested the services or any of the equipment or appliances in this property, accordingly we strongly advise prospective buyers to commission their own survey or service reports before finalising their offer to purchase.