



PORTERS ESTATE AGENTS
RESIDENTIAL SALES, LETTINGS & MANAGEMENT

ANDREW CROFT & CO
SOLICITORS & NOTARY PUBLIC



**BRITISH
PROPERTY
AWARDS**

2019 - 2020
★★★★★

GOLD WINNER

LETTING AGENT
IN SW17

240 Balham High Road
London SW17 7AW
Tel: 020 8772 1004
www.porters.property
info@porters.property
DX: 41604 Balham

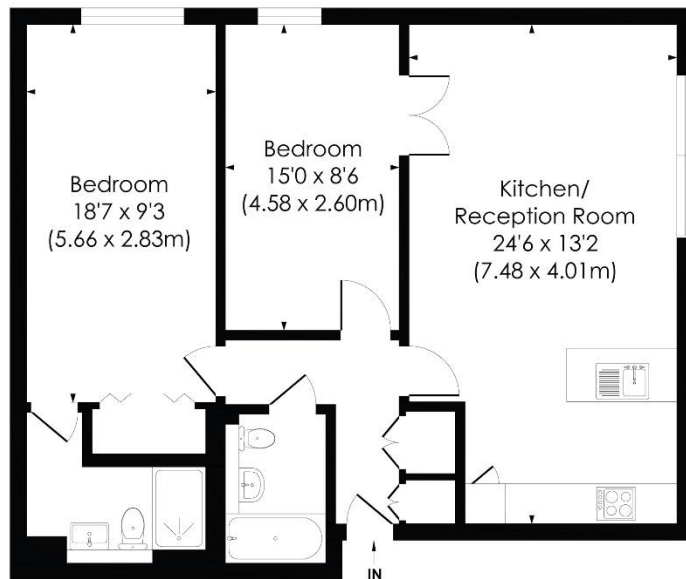


Blueprints Balham Grove Balham SW12 8AU

BALHAM GROVE, SW12

Approx. Gross Internal Floor Area

813 Sq. ft/75.49 Sq. m



FIRST FLOOR

Council Tax: London Borough of Wandsworth Band
E £ for 2020/2021

Underground parking

A truly wonderful and bright two double bedroom, two-bathroom first floor flat in this sought-after central Balham location. The flat has been finished to a very high specification with underfloor heating and engineered wood floors, a fully fitted kitchen with built in appliances, two-bathroom suites and a stunning open plan reception room. Blueprints is a gated development located in central Balham within easy reach of the mainline station and Northern line tube, Waitrose and the many shops of the high street are on your doorstep.

- TWO BEDROOM TWO BATHROOM LUXURY FLAT
- SOUGHT AFTER CENTRAL BALHAM LOCATION
- Finish to a high spec with underfloor heating and engineered wood floors
- Spacious open plan reception room with floor to ceiling windows
- Fully fitted kitchen with built in appliances
- Double glazed windows
- Two double bedrooms